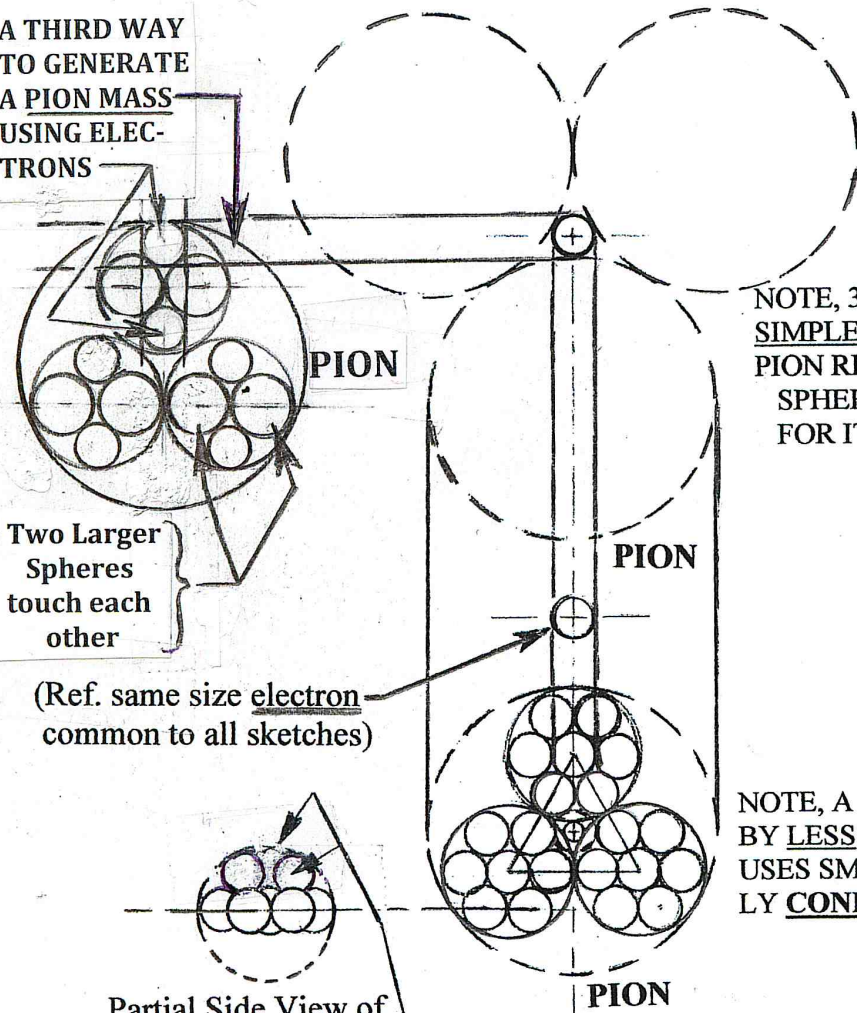


A THIRD WAY TO GENERATE A PION MASS USING ELECTRONS



NOTE, 3 PIONS MADE BY SIMPLE MEANS; BUT EACH PION REQUIRES 2 'PARTNER' SPHERES OUTSIDE ITSELF FOR ITS CONSTRUCTION

Two Larger Spheres touch each other

(Ref. same size electron common to all sketches)

NOTE, A SINGLE PION MADE BY LESS SIMPLE MEANS; BUT USES SMALL SPHERES ENTIRELY CONFINED WITHIN ITSELF!

Partial Side View of 'Hex-sphere'-Pattern showing Optional 'topping' (that would also help prompt same spherical canopy)

Fig. 3X, (3) Ways to Generate the Pion-to-electron Mass Ratio: (270.10/1)

The bottom sketch shows an alternate way to generate our Pion-to-electron 'volume' ratio, (270.10/1); and, therefore, also our (270.10/1) estimate for the average Pion-to-electron mass ratio. It 'comes out' identical to the each of the three Pions generated in the upper sketch; but note that the Pion in the bottom sketch was generated by electrons solely inside of the Pion there. Similarly for the sketch at upper left.

Notice, from the 'partial side-view' sketch (shown to the left of the bottom sketch) that even a triangular pattern of '3-electrons', above the 7 main electrons, would encourage the exact same size surrounding sphere as the 7 electrons below it.